

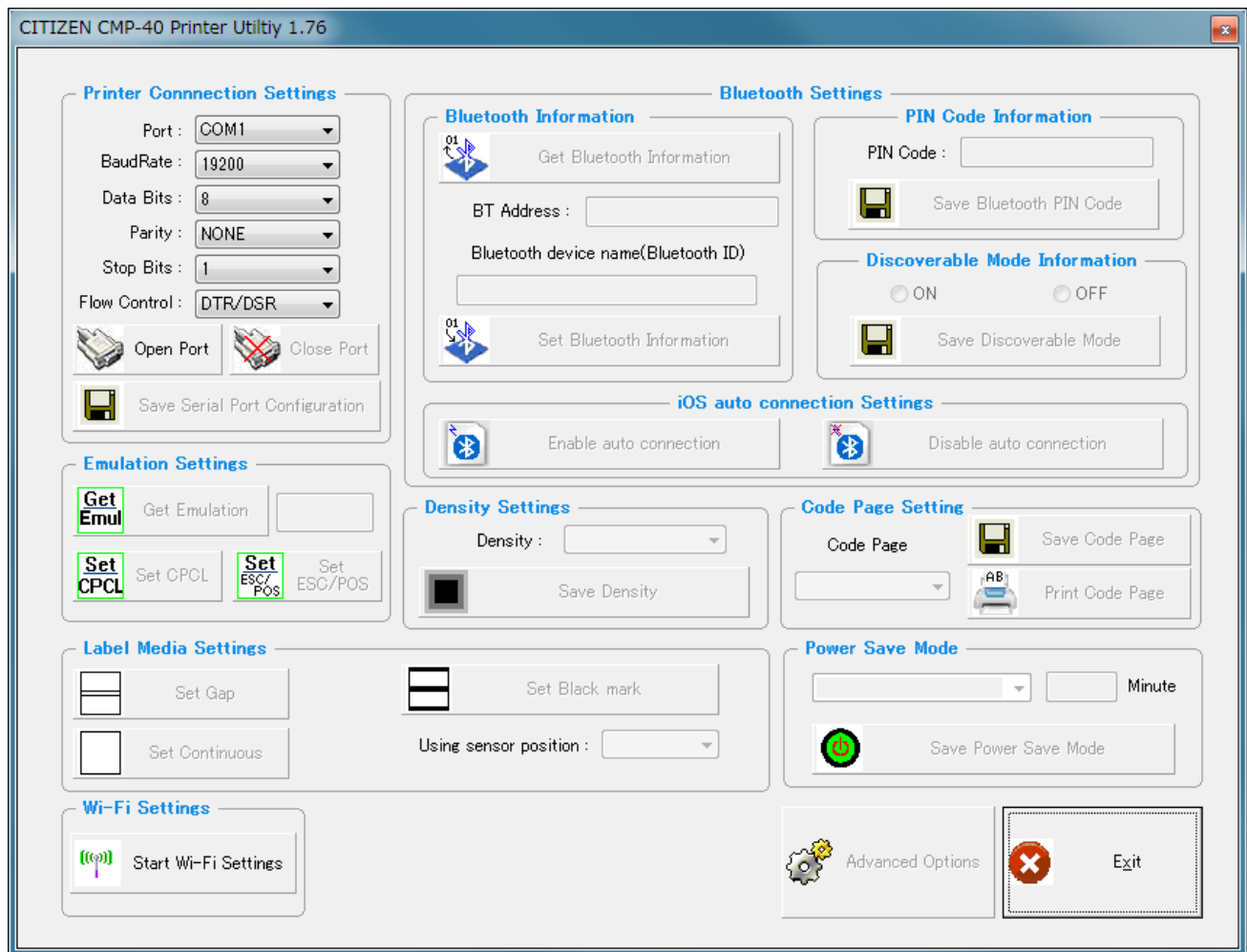
Mobile Printer CMP-40
Utility Manual (V1.76)

CITIZEN SYSTEMS JAPAN CO.,LTD.

TABLE OF CONTENTS

TABLE OF CONTENTS	2
1. Startup screen.....	3
2. Printer Connection Settings with PC	4
3. Bluetooth Interface settings.....	5
3-1. BT address and device name.....	5
3-2. PIN Code Information.....	5
3-3. Discoverable Mode Information.....	6
3-4. iOS auto Connection Settings.....	6
4. Power Save/Auto Power Off Mode.....	7
5. Emulation settings.....	8
5-1. Label Media Settings (CPCL).....	8
5-2. Advanced Options (CPCL).....	9
5-3. Density (ESC/POS).....	11
5-4. Code page (ESC/POS).....	11
6. Wi-Fi Interface setting screen	12
6-1. Port Information.....	13
6-2. Wi-Fi setting configuration	14
6-3. Wi-Fi Information.....	15
6-4. WPA Authentication.....	16
6-5. Enterprise Settings.....	16

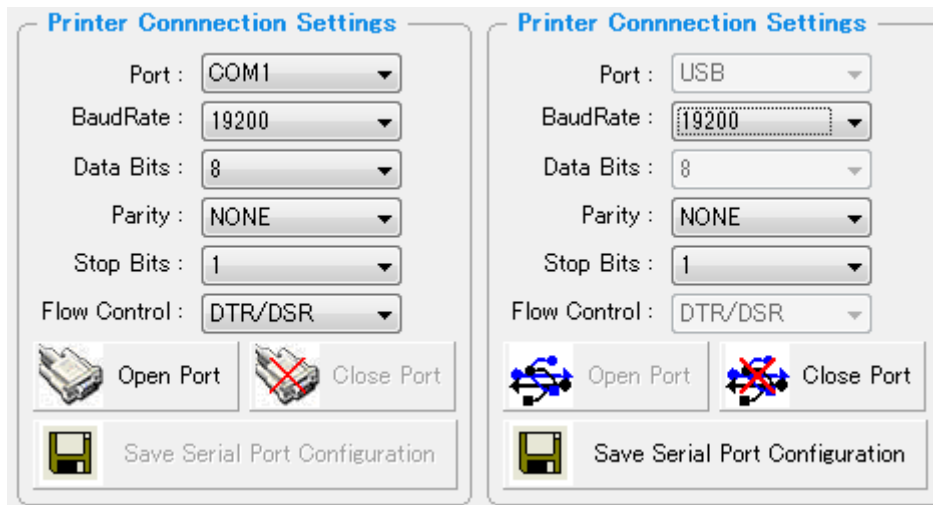
1. Startup screen



The Printer Utility can perform the setup of a printer easily.

Setting of a wireless LAN calls a different screen.

2. Printer Connection Settings with PC



You can connect the printer to PC by Serial (COM1 – COM9) or USB port. To start the communication, press the 'Open Port'.

When you use Serial Port, you have to check the Baud Rate setting between the printer & PC.

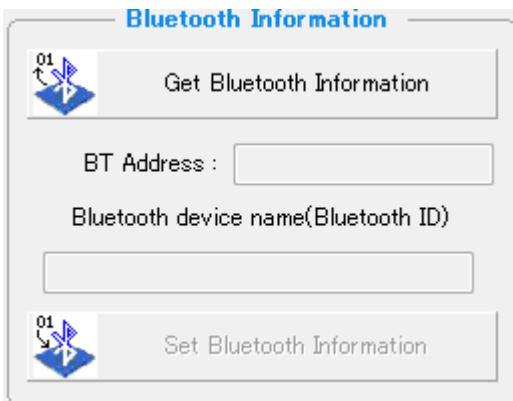
- Port Select the Port Number from [COM1] to [COM9].
- BaudRate Select the Baud Rate from [1200], [2400], [4800], [9600], [19200], [38400], [57600], [115200].
- Data Bits Select the Data Bits from [7] or [8].
- Parity Select the Parity form [NONE], [ODD] or [EVEN].
- Stop Bits Select the Stop Bits from [1] or [2].
- Flow Control Select the Flow Control from [DTR/DSR] or [Xon/Xoff].

Once the printer is connected with PC via serial interface, you can change the BaudRate setting of the printer and you can save the changed BaudRate to the printer by 'Save Serial Port Configuration'.

You can disconnect printer from the PC by clicking 'Close Port'.

3. Bluetooth Interface settings

3-1. BT address and device name



Bluetooth Information

01 Get Bluetooth Information

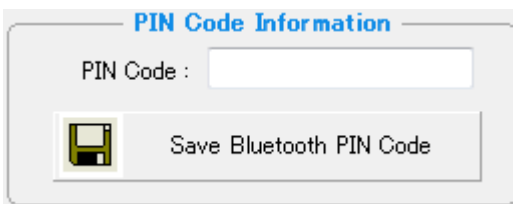
BT Address :

Bluetooth device name(Bluetooth ID)

01 Set Bluetooth Information


Printer's Bluetooth unique address can be checked. by "Get Bluetooth Information", Bluetooth device name can be changed by "Set Bluetooth Information".

3-2. PIN Code Information



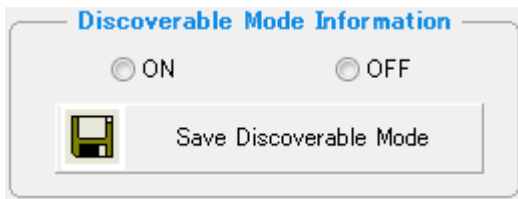
PIN Code Information

PIN Code :

 Save Bluetooth PIN Code

You can register Bluetooth PIN Code by inputting PIN Code and execute "Save Bluetooth PIN Code"
Default PIN Code is '0000'.

3-3. Discoverable Mode Information



When you set "Discoverable Mode" as ON, the printer can be detected by other Bluetooth devices (PDA, Smart Phone...) and when you set it as "Off", the printer can not be detected by other devices.

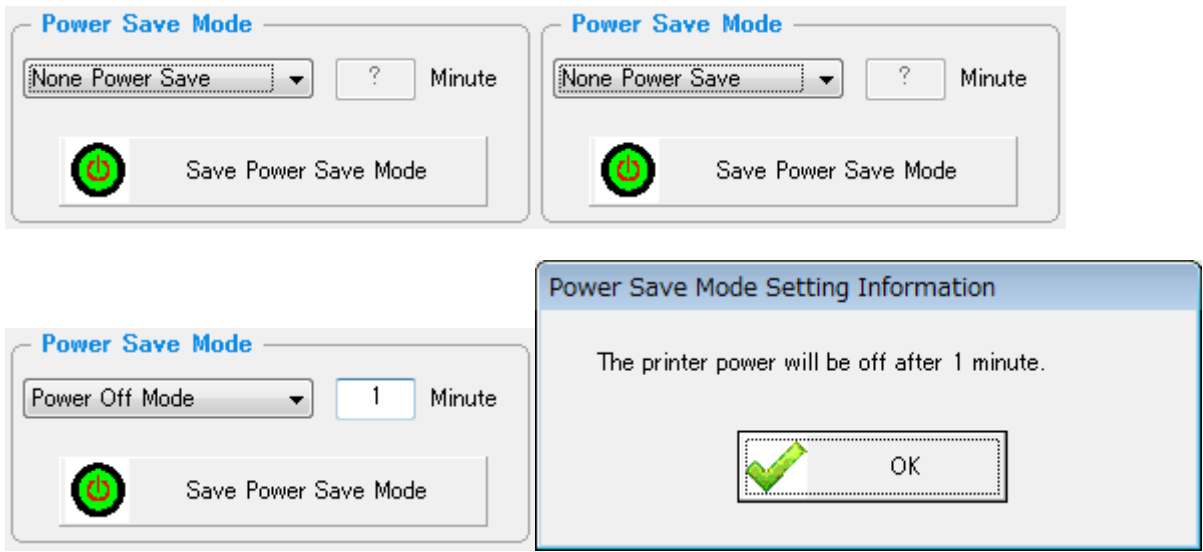
3-4. iOS auto Connection Settings



If the printer supports Auto connection setting of Bluetooth to iOS device and you want to disable the function or change back to enable the function, press Disable/Enable buttons.

This does not work for the model which does not support Auto connection function.

4. Power Save/Auto Power Off Mode

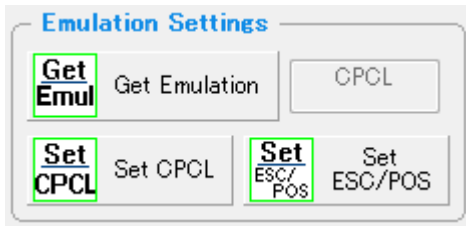


You can set the power save mode like “None Power Save”, “Power Save Mode” & “Power Off Mode” and you can set the waiting time to Power Save Mode.

After making necessary setting changes, press ‘Save Power Save Mode’. Then changed setting is saved in the printer.

- None Power Save Do not use Power Mode.
- Power Save Mode After the fixed time passes without working, the printer goes into Power Save Mode automatically.
- Power Off Mode After the fixed time passes without working, the printer power becomes off automatically.

5. Emulation settings

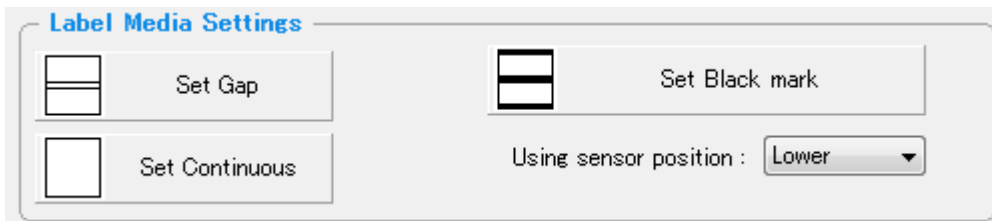


Current emulation is shown by "Get Emulation".

Press "Set CPCL" or "Set ESC/POS" to change the emulation. Printer's power is turned off automatically.

Following 4 settings are depending of the printer emulation and work only for either emulation.

5-1. Label Media Settings (CPCL)

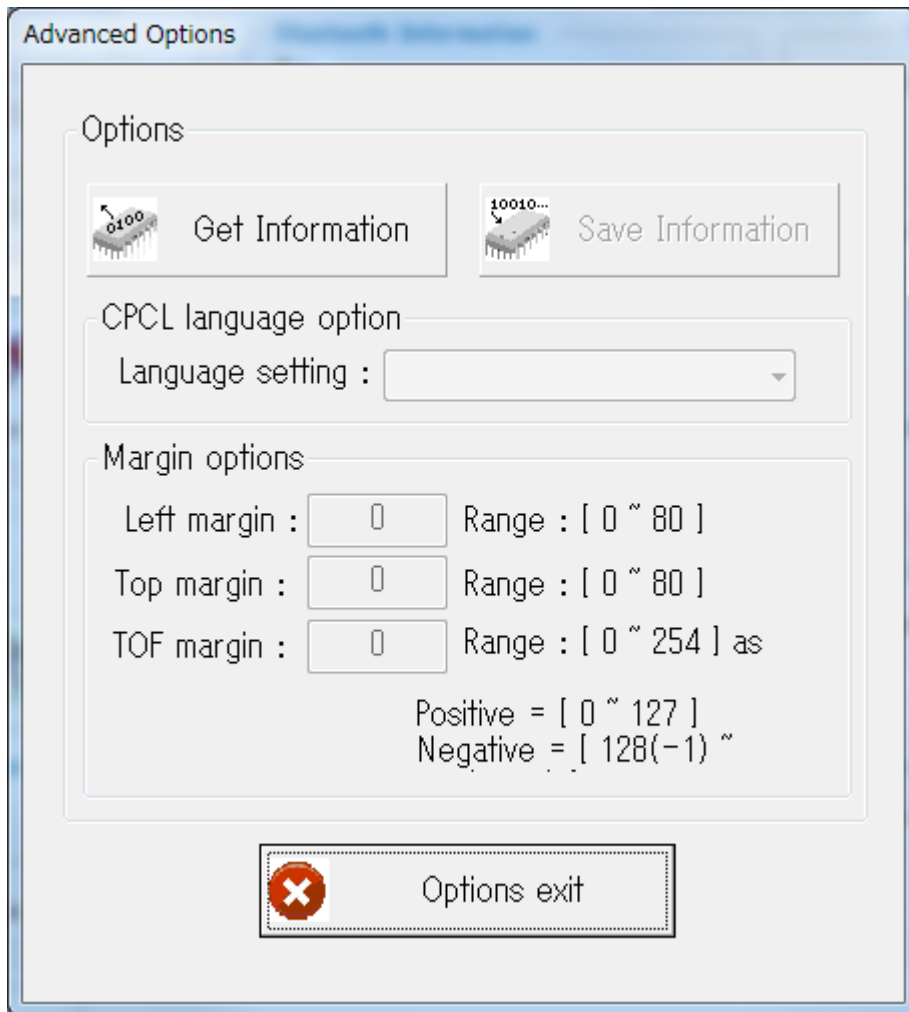


Media sensor can be set here for CPCL.

5-2. Advanced Options (CPCL)



After Executing Utility, please click 'Advanced Options'.



When you click 'Get Information', you can see current information of the printer.

After making necessary setting changes, press 'Save Information'. Then changed setting is saved in the printer.

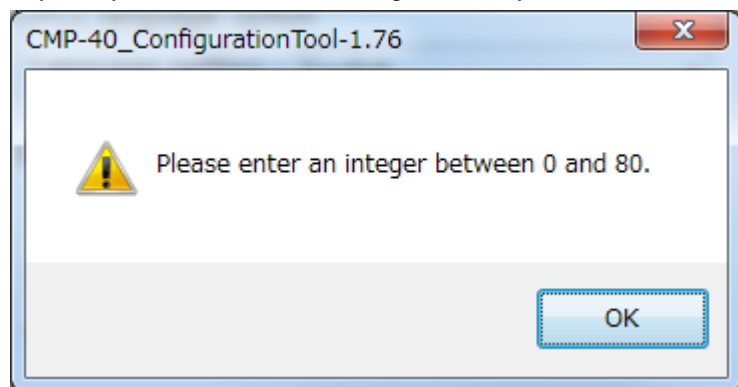
CPCL Language option

- Language settings Select the Language from [English], [Korean], [Japanese], [GB2313], [BIG5].

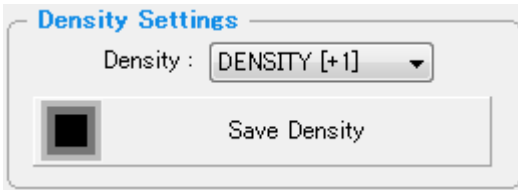
Margin Options

- Left Margin Select the Left Margin from [0] to [80].
- Top Margin Select the Top Margin from [0] to [80].
- TOF Margin Select the TOF Margin from [0] to [254].

If you try to set an out of range value, you will see a message similar to the following.

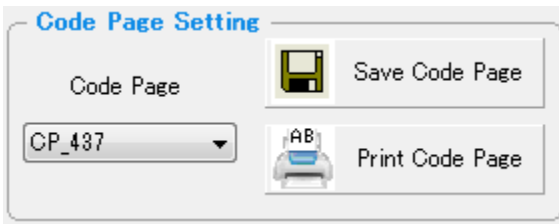


5-3. Density (ESC/POS)



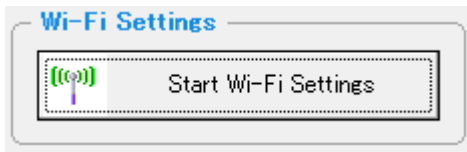
Print density can be set in 5 grades between -1 to +3.

5-4. Code page (ESC/POS)

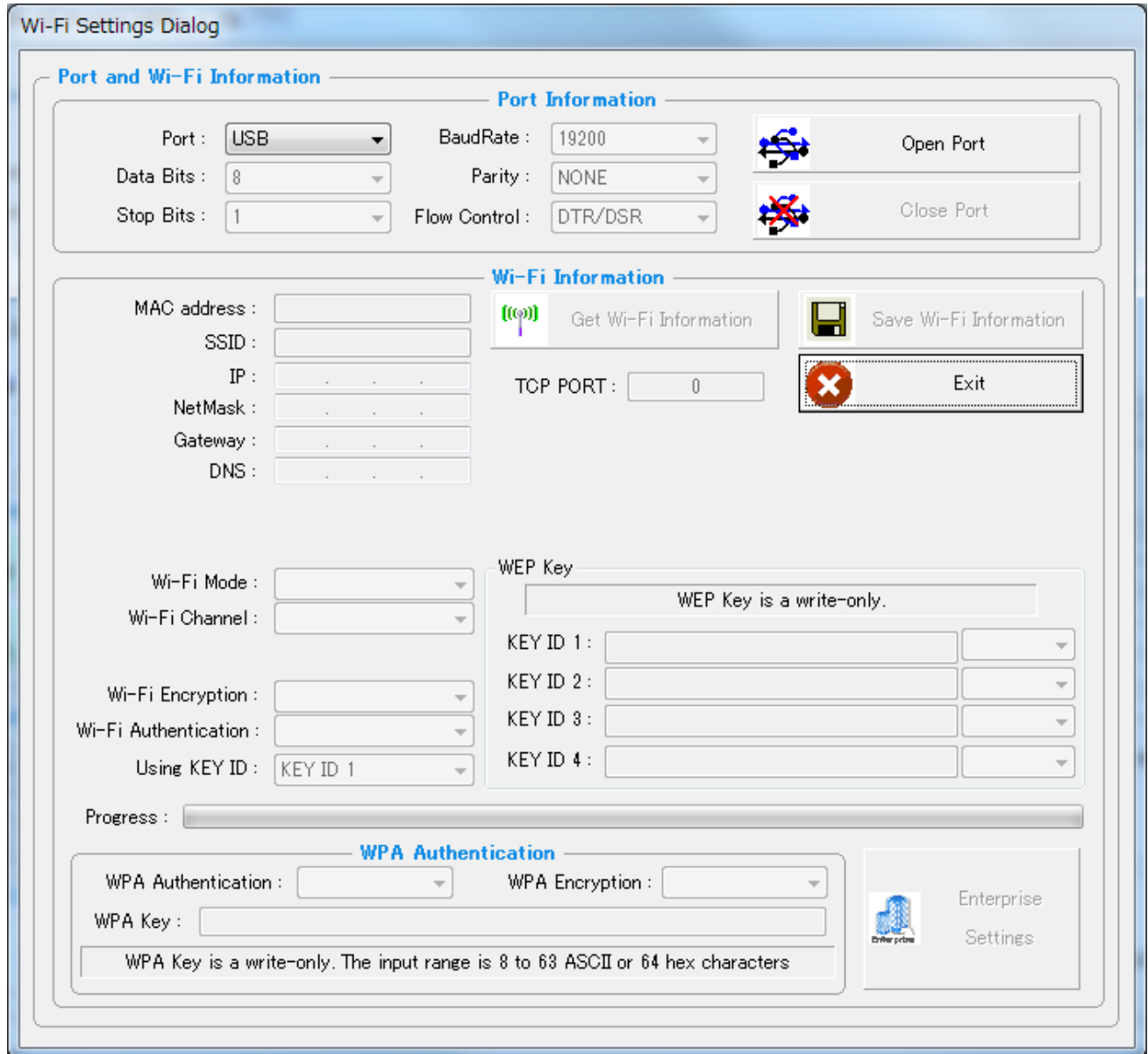


You can choose code page and print the code page data here.

6. Wi-Fi Interface setting screen



After Executing Utility, please click 'Start Wi-Fi Settings'.



6-1. Port Information

Port and Wi-Fi Information

Port Information

Port : USB
Data Bits : COM1
Stop Bits : COM2
COM3
COM4
COM5
COM6
COM7
COM8
COM9
USB

BaudRate : 19200
Parity : NONE
Flow Control : DTR/DSR

Open Port
Close Port

Wi-Fi Information

Get Wi-Fi Information
Save Wi-Fi Information

You can connect the printer to PC by Serial (COM1 – COM9) or USB.

Port Information

Port : COM1
Data Bits : 8
Stop Bits : 1

BaudRate : 19200
Parity : NONE
Flow Control : DTR/DSR

Open Port
Close Port

If you use Serial Port, you have to check the BaudRate setting between the printer & PC.

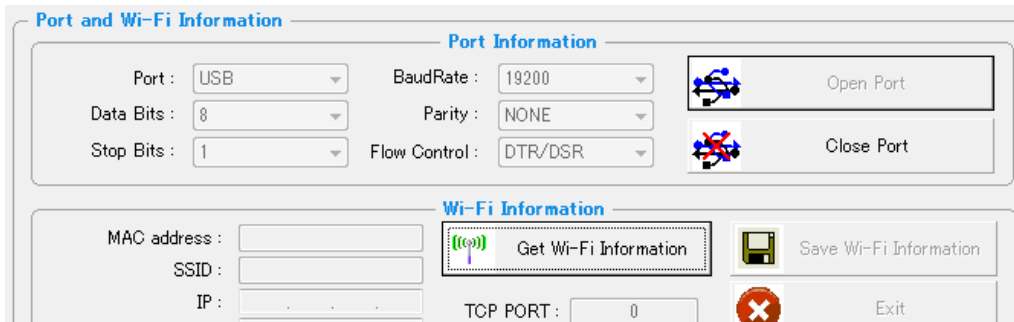
6-2. Wi-Fi setting configuration

Press “Open Port”.

Screen means that printer and PC are connected.

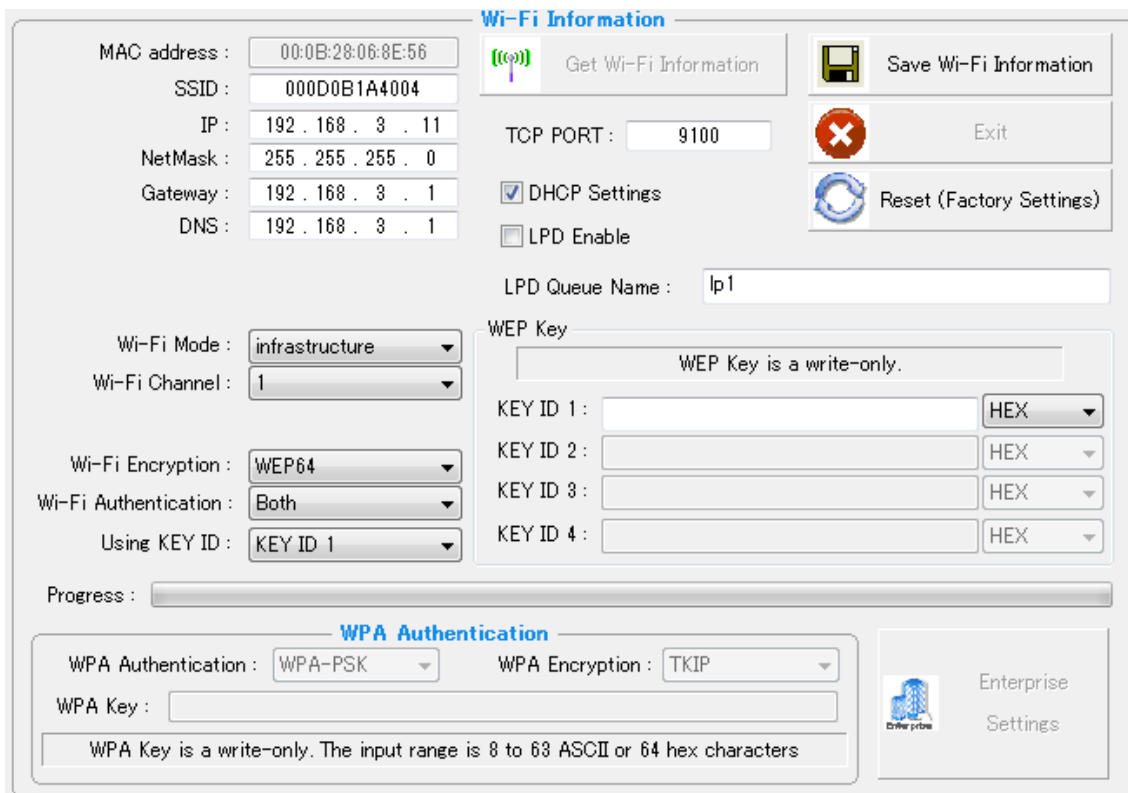
(Press “Close Port” when you want to close the connection.)

When you click ‘Get Wi-Fi Information’, you can see current Wi-Fi information of the printer.



After making necessary setting changes, press ‘Save Wi-Fi Information’. Then changed setting is saved the printer.

Wi-Fi setting can be initialized by “Reset” and recycle the power.



6-3. Wi-Fi Information

You can set the following.


- | | |
|------------------------|--|
| - SSID | You enter the SSID of the access point. |
| - IP | In the case of Static IP, you enter the address. |
| - Net Mask | You enter the Net Mask. |
| - Gateway | You enter the IP address of the access point. |
| - DNS | If you are using a DNS server, enter its address. |
| - Wi-Fi Mode | Select the Wi-Fi Mode from [infrastructure] or [adhoc]. |
| - Wi-Fi Channel | Select the Wi-Fi Channel from [1] to [14]. |
| - Wi-Fi Encryption | Select the Wi-Fi Encryption from [None], [WEP 64], [WEP 128], [WPA], [802.1x]. |
| - Wi-Fi Authentication | Select the Wi-Fi Authentication from [None], [Open System], [Shared Key], [Both]. |
| - Using KEY ID | Select the KEY ID for WEP from [1] to [4] and enter the KEY. |
| - TCP PORT | Default port to use Wi-Fi communication is 9100. If you want to change the port, enter here. |
| - DHCP Settings | If you want to use DHCP for IP address solution, choose DHCP. |
| - LPD Enable | If you want to use LPD, choose LPD Enable. |
| - LPD Queue Name | You can set the LPD Queue name. |

6-4. WPA Authentication

Our printer supports WPA PSK (TKIP) or WPA2 PSK (AES).

If you select the WPA in the Wi-Fi Encryption, WPA Authentication is enabled.

WPA Authentication			
WPA Authentication :	<input type="text" value="WPA-PSK"/>	WPA Encryption :	<input type="text" value="TKIP"/>
WPA Key :	<input type="text"/>		
WPA Key is a write-only. The input range is 8 to 63 ASCII or 64 hex characters			


Enterprise
Settings

6-5. Enterprise Settings

If you select the 802.1x in the Wi-Fi Encryption, Enterprise settings is enable.

Please set it according to the environment.

WPA Authentication			
WPA Authentication :	<input type="text" value="WPA-PSK"/>	WPA Encryption :	<input type="text" value="TKIP"/>
WPA Key :	<input type="text"/>		
WPA Key is a write-only. The input range is 8 to 63 ASCII or 64 hex characters			

Enterprise
Settings